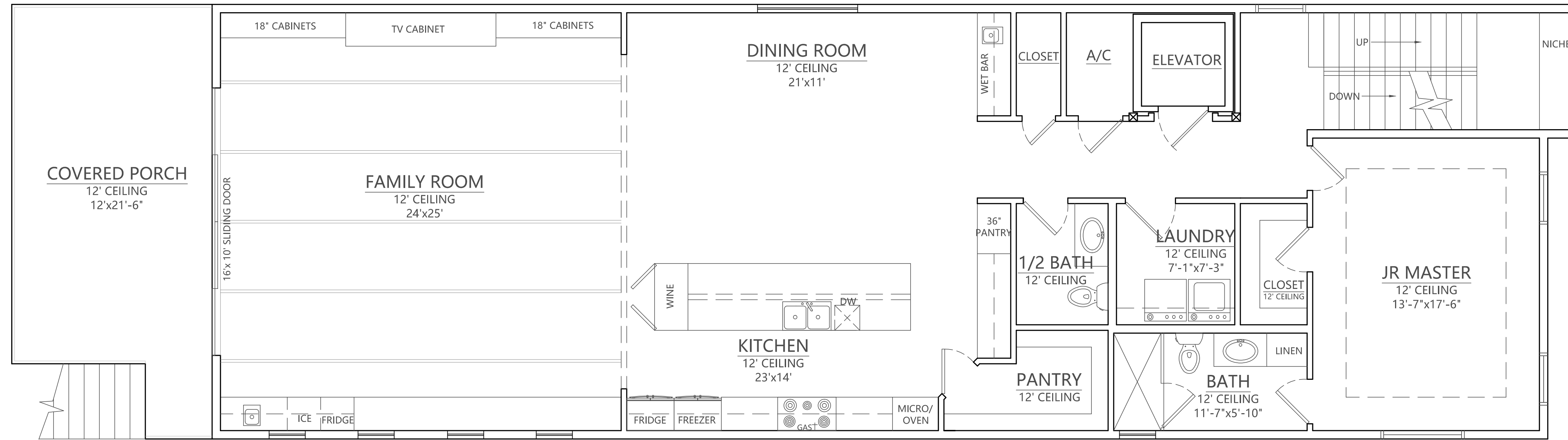


23-008

TERRY MORAN
ENGINEERING

P.O. BOX 4075
BILOXI, MS 39535
PH 228.896.4733
FAX 228.896.6768

TERRY MORAN,
P.E., P.L.S

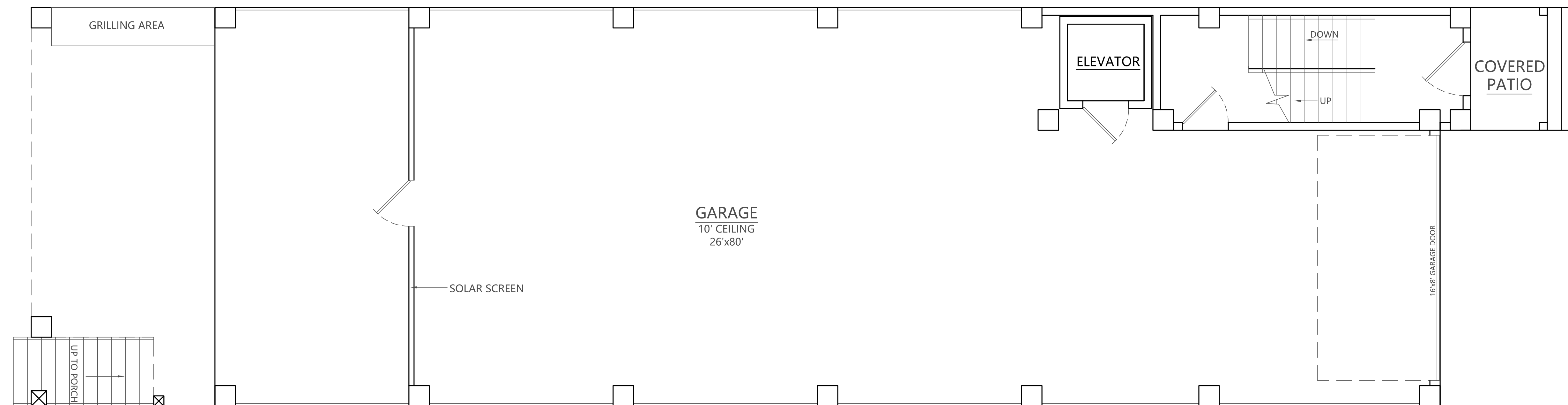


AREA CALCULATIONS:

1ST FLOOR HEATED:	2,078 SF
2ND FLOOR HEATED:	1,987 SF
3RD FLOOR HEATED:	1,965 SF
TOTAL HEATED:	6,030 SF
GARAGE:	2,096 SF
PORCHES:	772 SF
TOTAL UNDER ROOF:	8,927 SF

3 STORY FLOOR PLAN

1ST FLOOR



3 STORY FLOOR PLAN

GARAGE

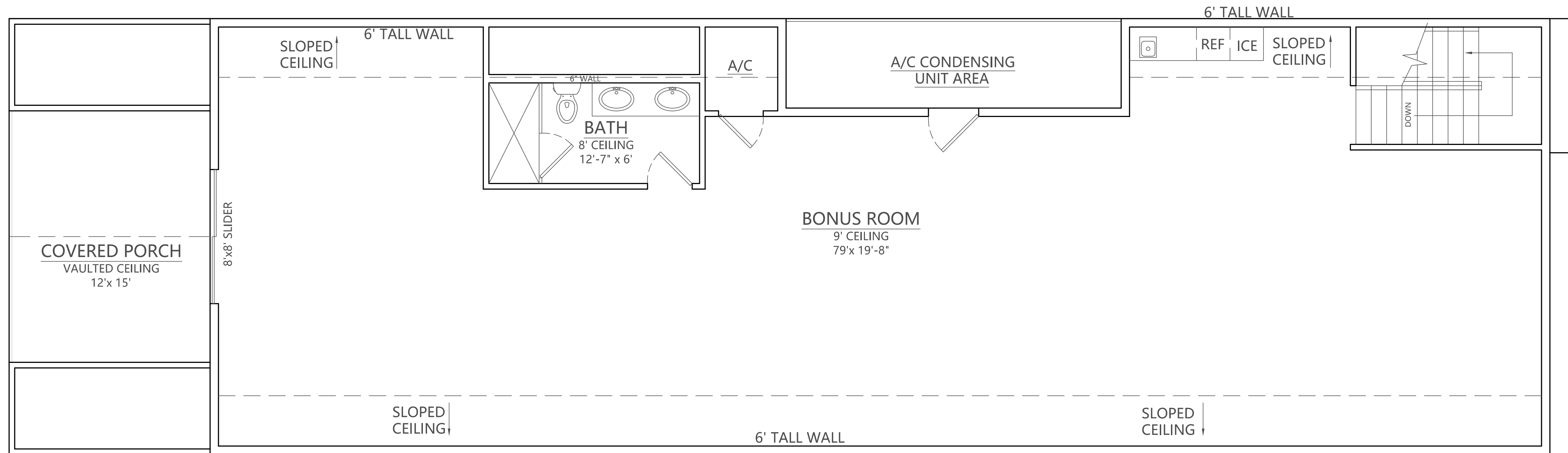
In Association With

FA FOUNTAIN & ASSOCIATES
 CIVIL AND COMMERCIAL DESIGN
 1822 15th Street, Ste. 12
 Gulfport, MS 39501
 228-861-5209

Date 08-22-2023
 Drawn By C.A.B.
 Check By T.J.M.
 REV _____

A NEW HOME IN
 CRISTIANO BOARDWALK
 SUBDIVISION
 BEACH BLVD
 BILOXI, MS 39531

B1

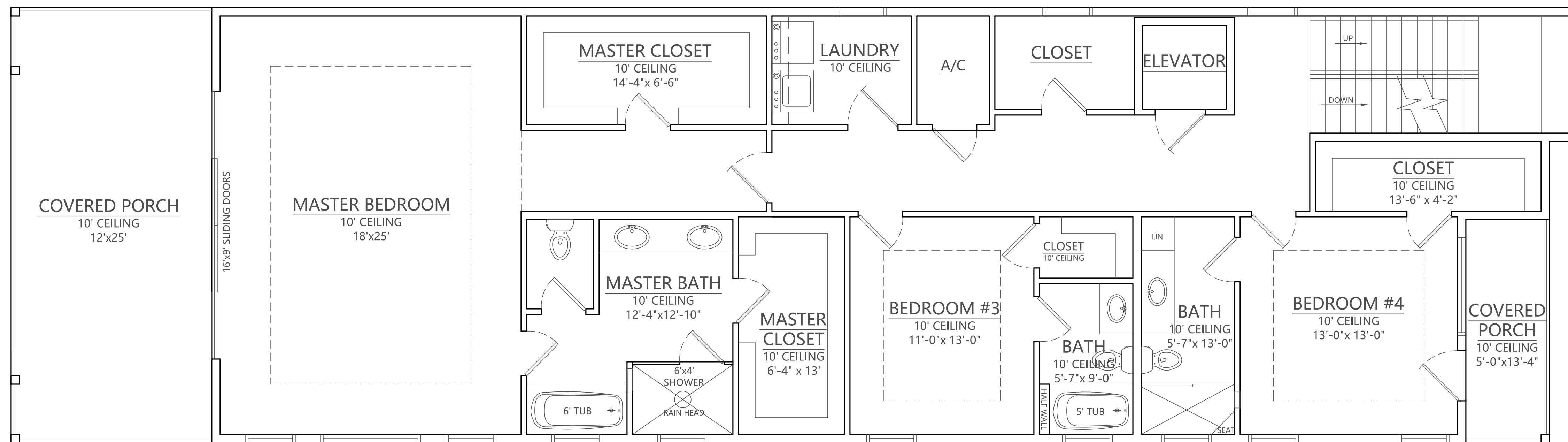


3 STORY FLOOR PLAN

3RD FLOOR

In Association With

FA FOUNTAIN & ASSOCIATES
CIVIL AND COMMERCIAL DESIGN
1822 15th Street, Ste. 12
Gulfport, MS 39501
228-861-5209



3 STORY FLOOR PLAN

2nd FLOOR

Date 08-22-2023
Drawn By C.A.B.
Check By T.J.M.
REV _____

A NEW HOME IN
CRISTIANO BOARDWALK
SUBDIVISION
BEACH BLVD
BILOXI, MS 39531



23-008

TERRY MORAN
ENGINEERING

P.O. BOX 4075
BILOXI, MS 39535
PH 228.896.4733
FAX 228.896.6768

TERRY MORAN,
P.E., P.L.S.

In Association With

FA FOUNTAIN & ASSOCIATES
CIVIL AND COMMERCIAL DESIGN
1822 15th Street, Ste. 12
Gulfport, MS 39501
228-861-5209

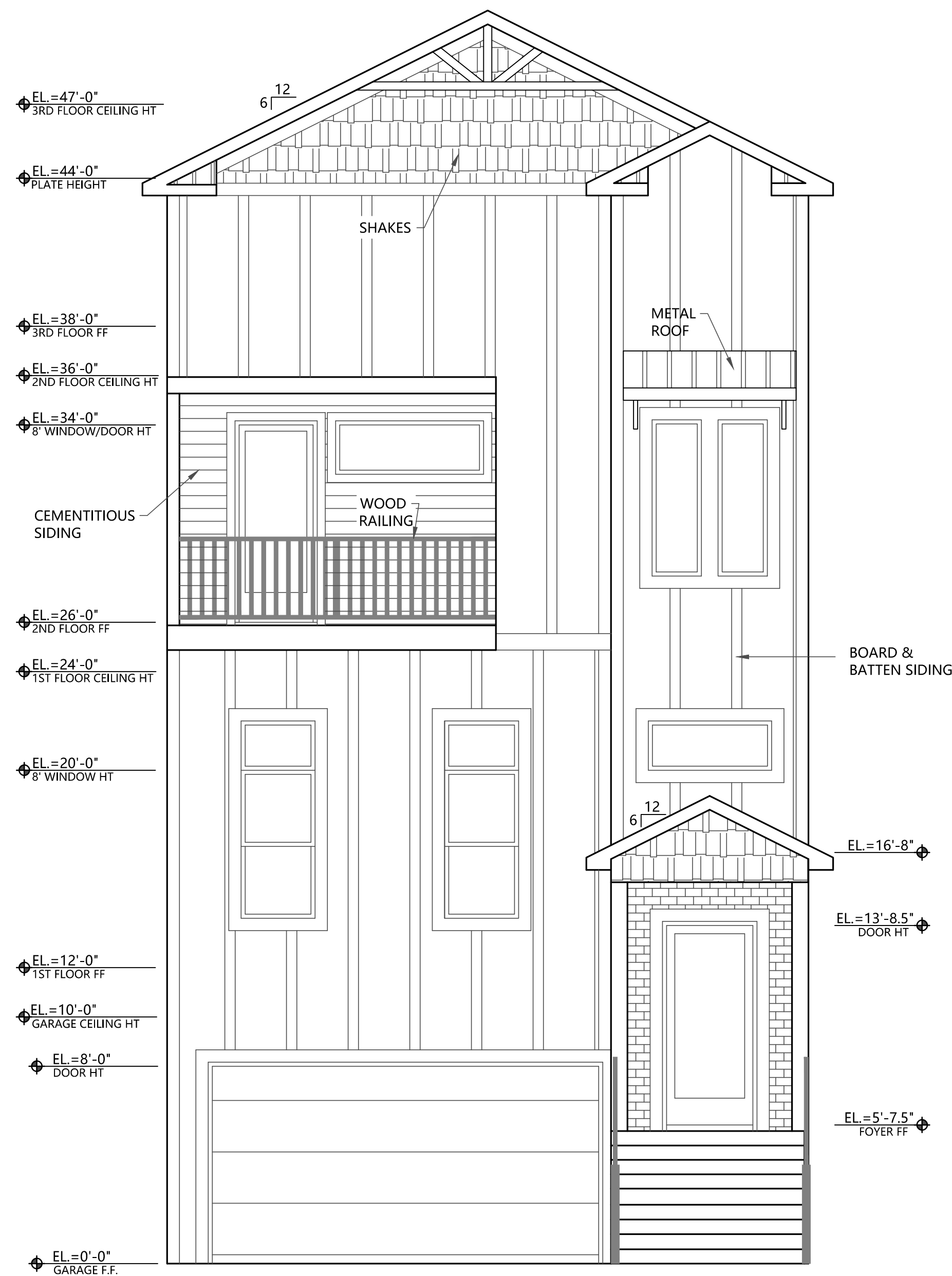
Date 08-22-2023

Drawn By C.A.B.

Check By T.J.M.

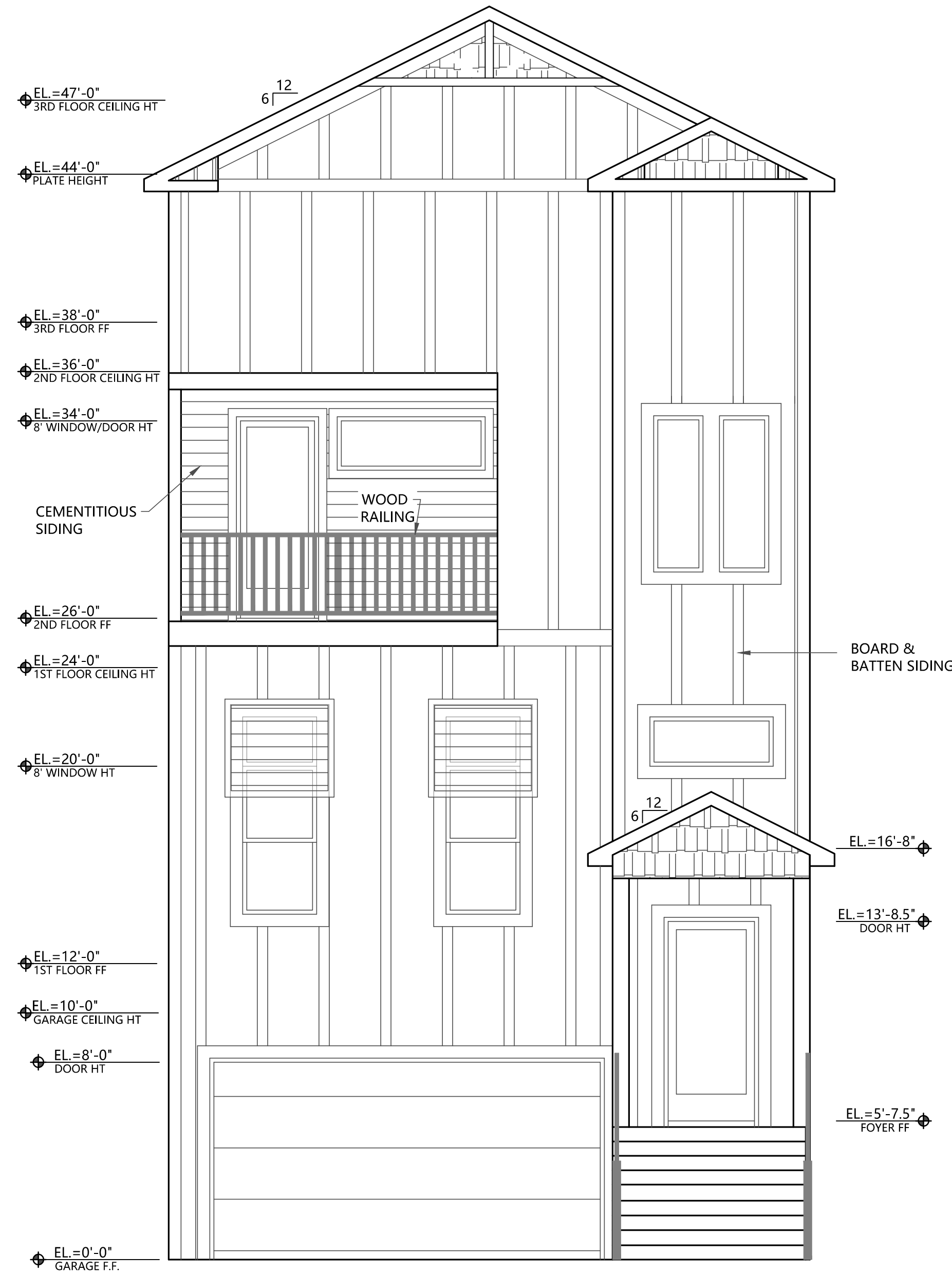
REV

A NEW HOME IN
CRISTIANO BOARDWALK
SUBDIVISION
BEACH BLVD
BILOXI, MS 39531

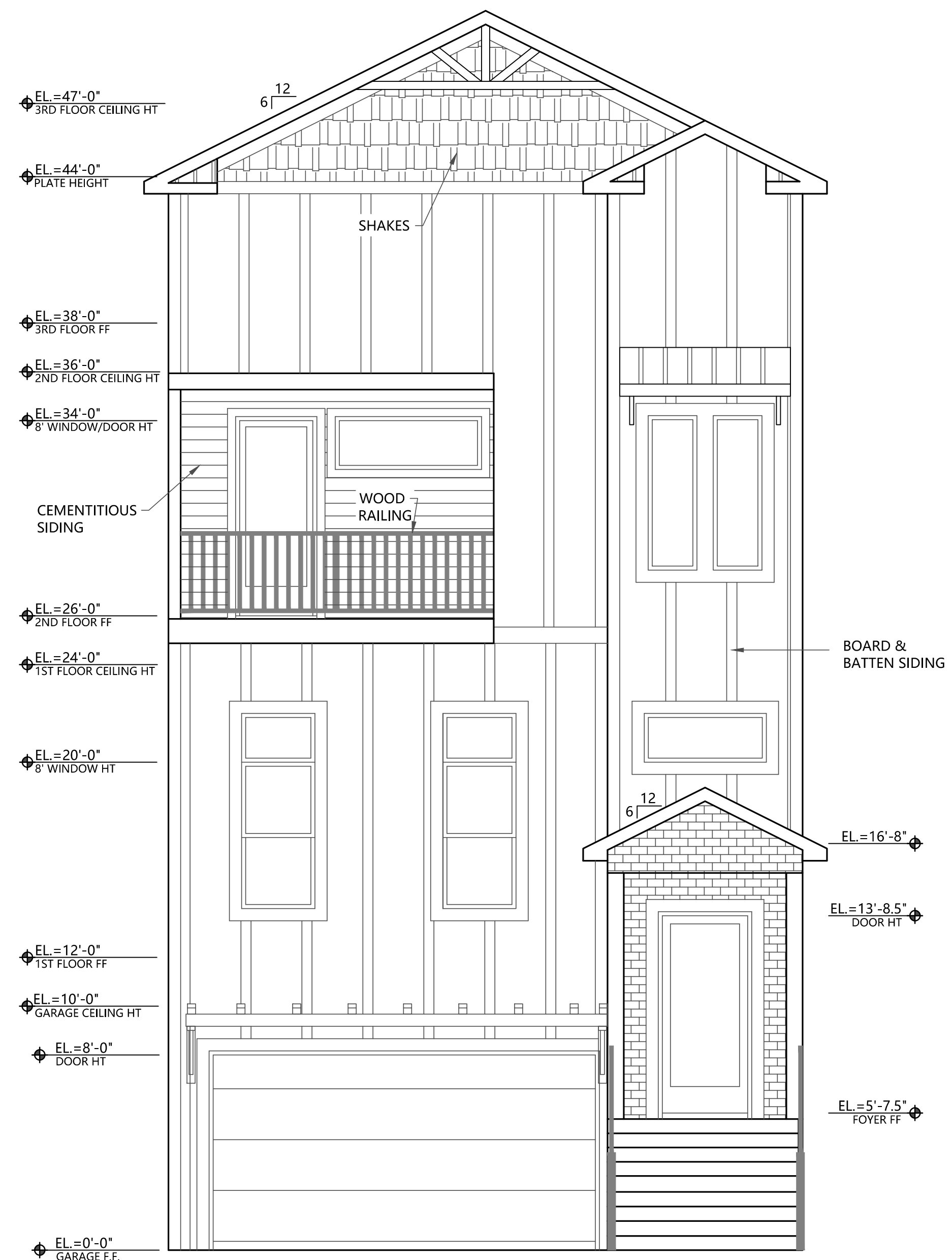


1

FRONT ELEVATION OPTIONS



2



3

In Association With

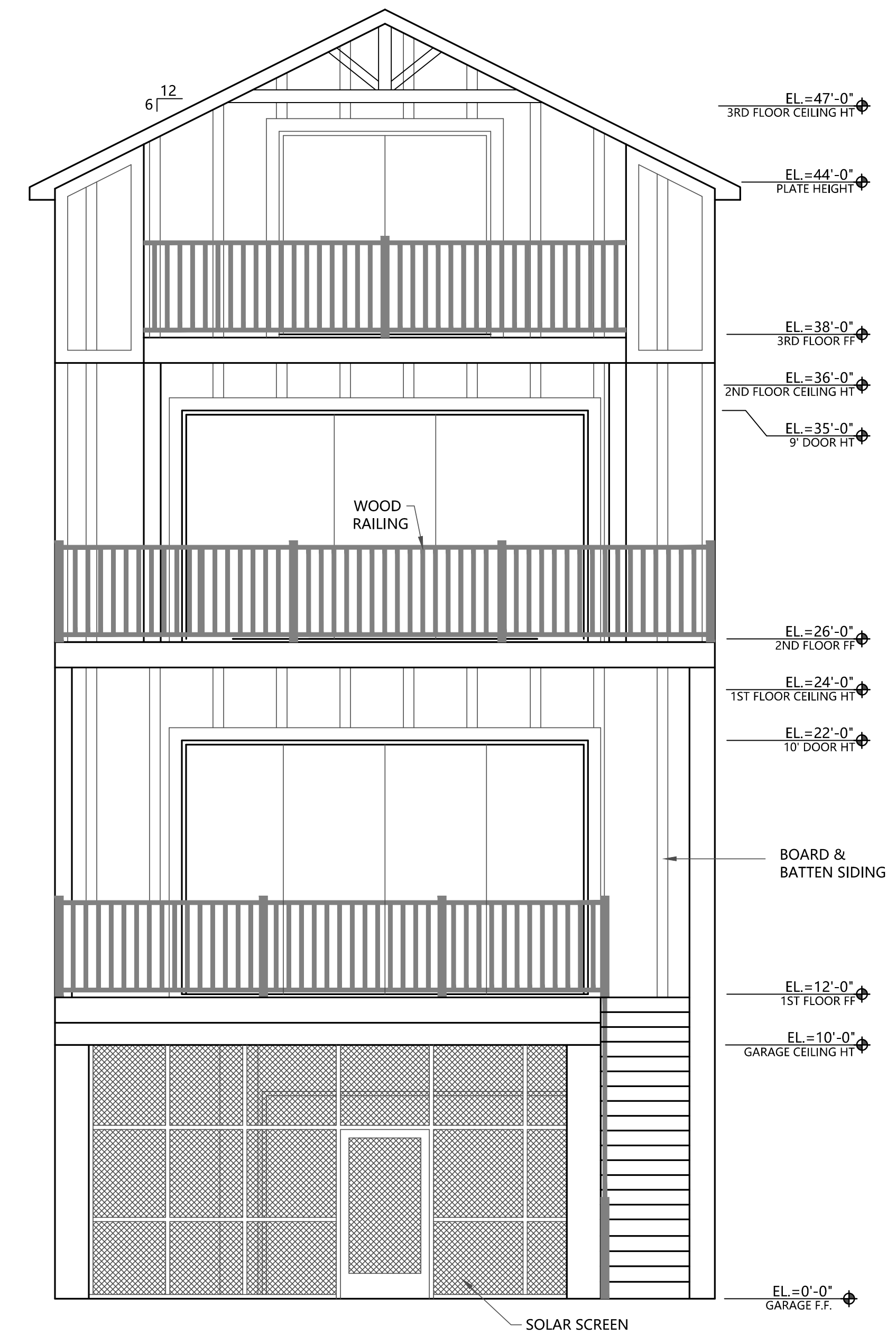
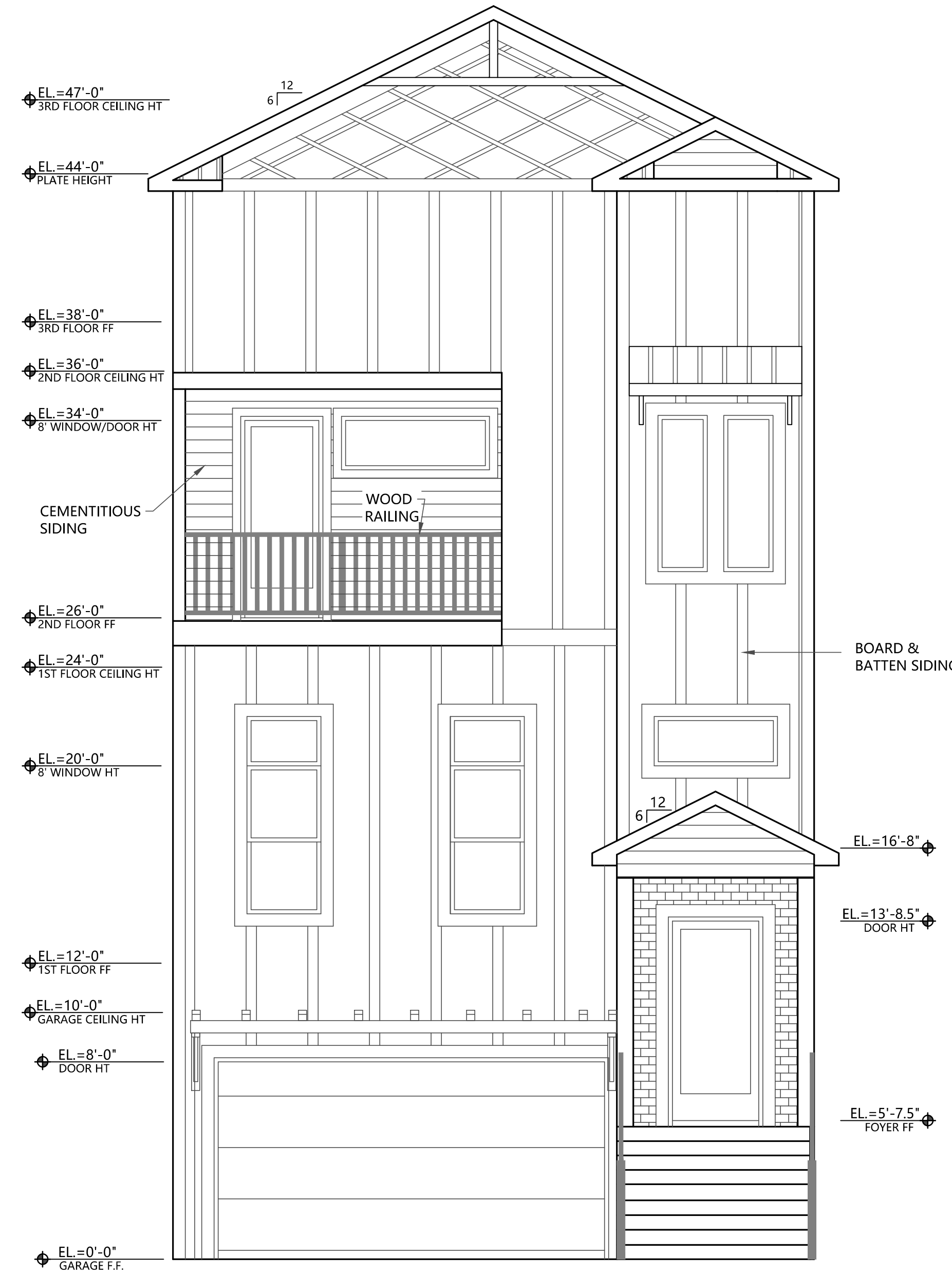
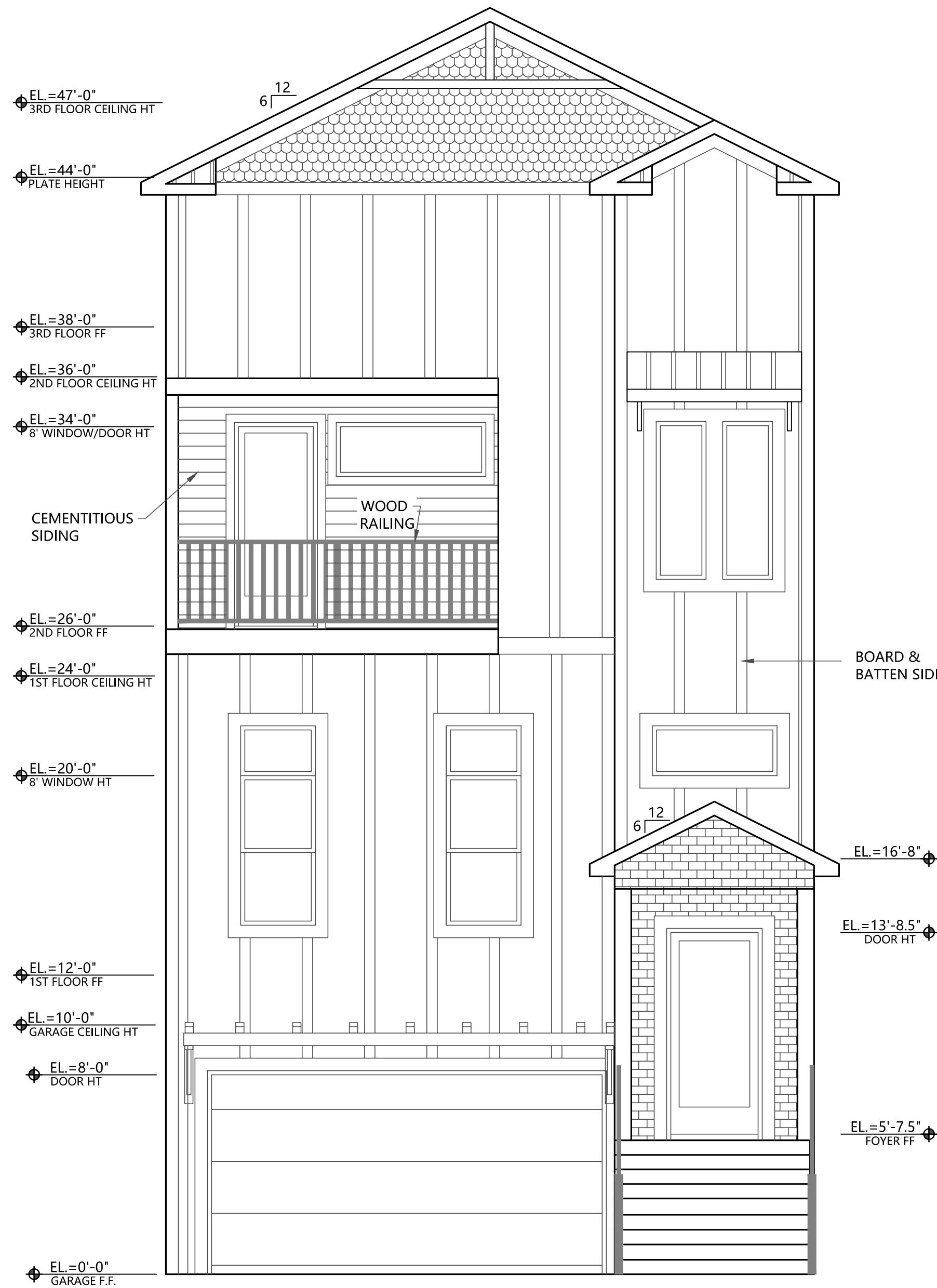
FA FOUNTAIN & ASSOCIATES
CIVIL AND COMMERCIAL DESIGN
1822 15th Street, Ste. 12
Gulfport, MS 39501
228-861-5209

Date: 08-22-2023

Drawn By: C.A.B.

Check By: T.J.M.

REV: _____



4

FRONT ELEVATION OPTIONS

5

REAR ELEVATION

A NEW HOME IN
CRISTIANO BOARDWALK
SUBDIVISION
BEACH BLVD
BILOXI, MS 39531

B2.1



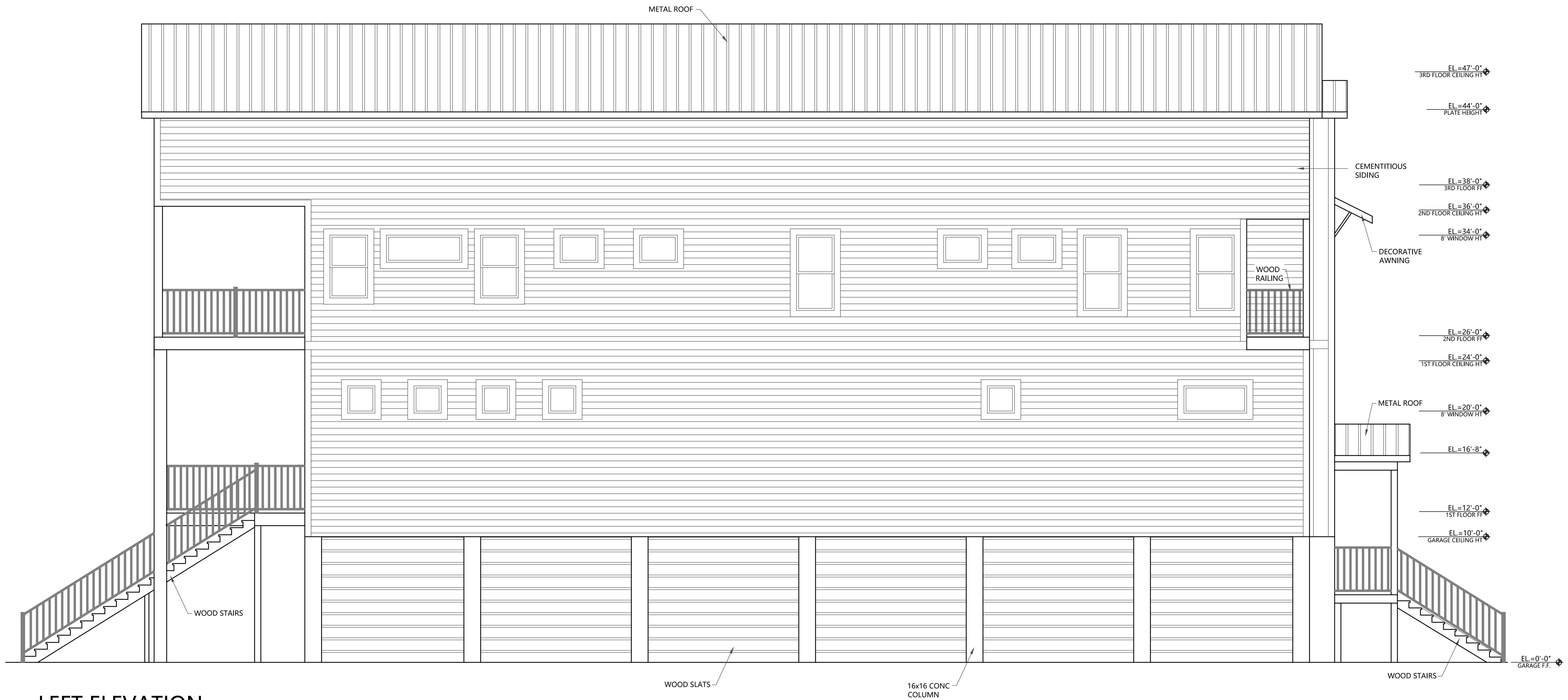
23-008

TERRY MORAN
ENGINEERING

P.O. BOX 4075
BILOXI, MS 39535

PH 228.896.4733
FAX 228.896.6768

TERRY MORAN,
P.E., P.L.S.



LEFT ELEVATION

In Association With

FA FOUNTAIN & ASSOCIATES
 CIVIL AND COMMERCIAL DESIGN
 1822 15th Street, Ste. 12
 Gulfport, MS 39501
 228-861-5209

Date 08-22-2023

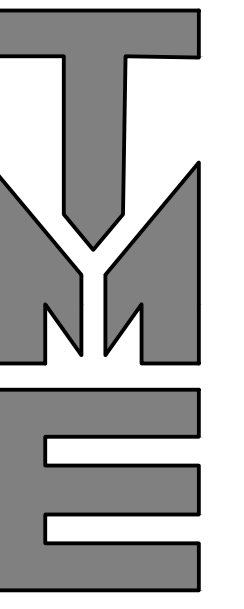
Drawn By C.A.B.

Check By T.J.M.

REV _____

A NEW HOME IN
 CRISTIANO BOARDWALK
 SUBDIVISION
 BEACH BLVD
 BILOXI, MS 39531

B2.2



23-008

TERRY MORAN
ENGINEERING

P.O. BOX 4075
BILOXI, MS 39535

PH 228.896.4733
FAX 228.896.6768

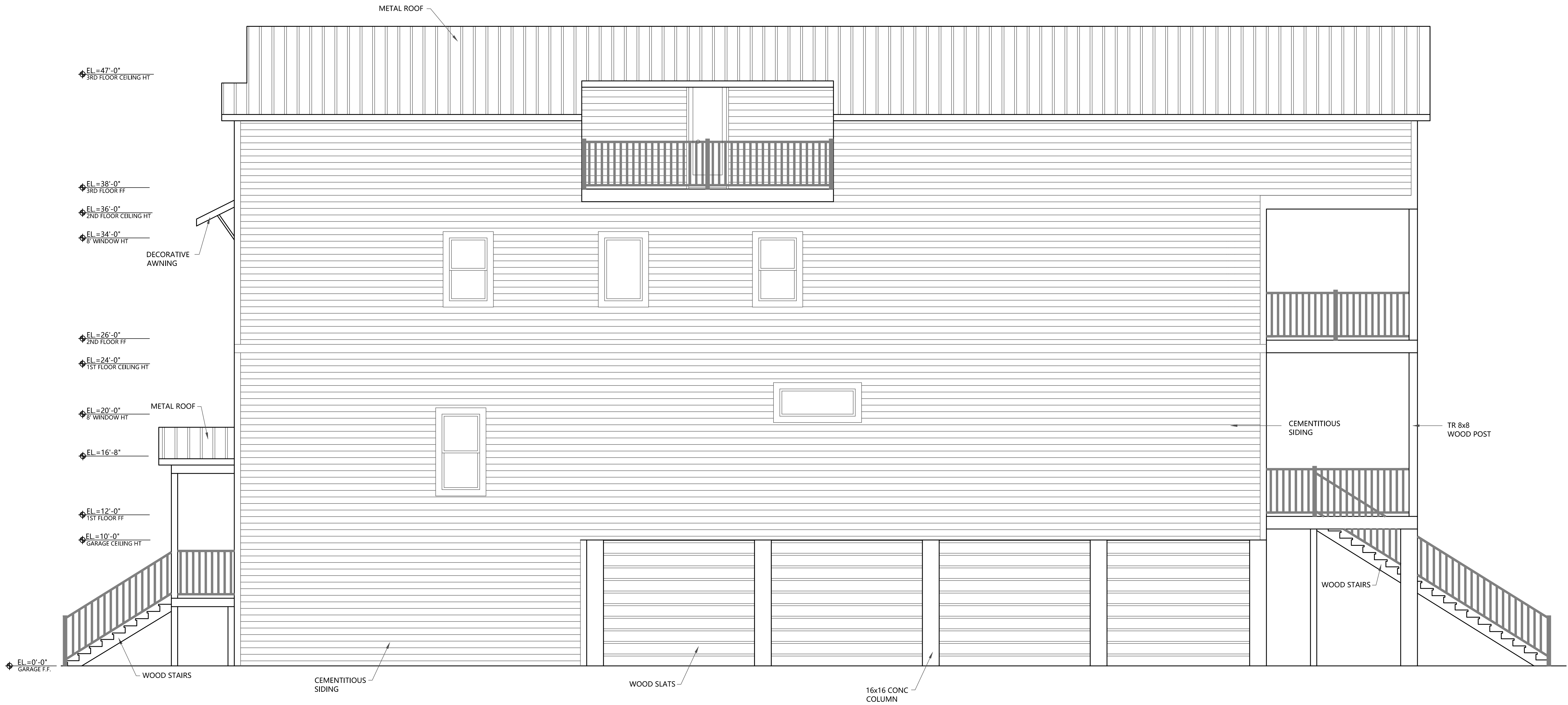
TERRY MORAN,
P.E., P.L.S

In Association With

FA FOUNTAIN & ASSOCIATES
CIVIL AND COMMERCIAL DESIGN
1822 15th Street, Ste. 12
Gulfport, MS 39501
228-861-5209

Date 08-22-2023
Drawn By C.A.B.
Check By T.J.M.
REV _____

A NEW HOME IN
CRISTIANO BOARDWALK
SUBDIVISION
BEACH BLVD
BILOXI, MS 39531



RIGHT ELEVATION

SCALE: 1/4" = 1'-0"

B2.3