

AREA CALCULATIONS:

1ST FLOOR HEATED:	2,078 SF
2ND FLOOR HEATED:	1,987 SF
TOTAL HEATED:	4,065 SF
GARAGE:	2,098 SF
PORCHES:	592 SF
TOTAL UNDER ROOF:	6,755 SF

In Association With

FA FOUNTAIN & ASSOCIATES
CIVIL AND COMMERCIAL DESIGN
1822 15th Street, Ste. 12
Gulfport, MS 39501
228-861-5209

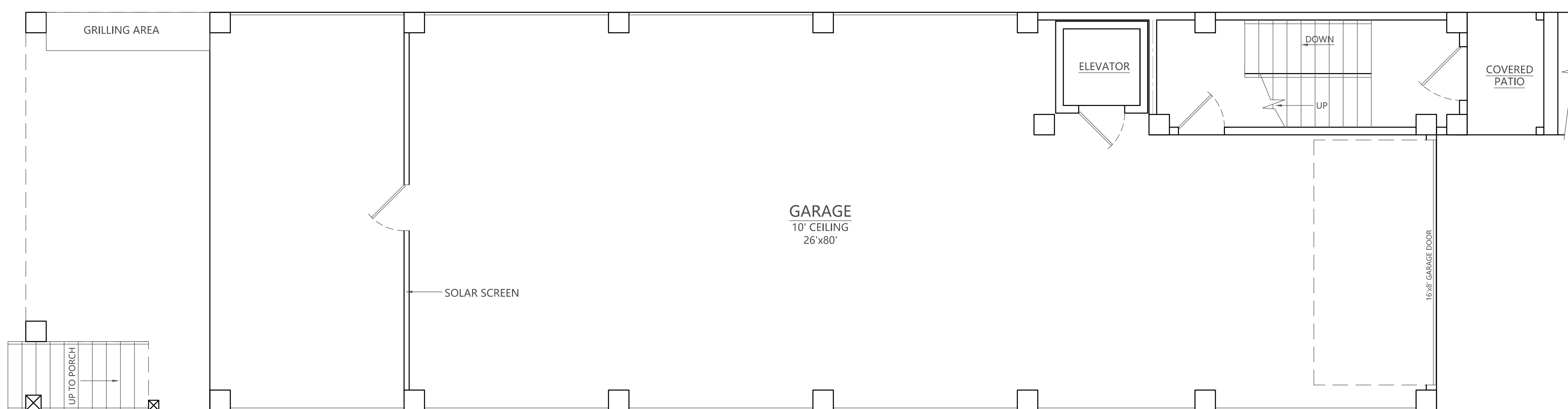
Date 08-22-2023
Drawn By C.A.B.
Check By T.J.M.
REV _____

A NEW HOME IN
CRISTIANO BOARDWALK
SUBDIVISION
BEACH BLVD
BILOXI, MS 39531

FLOOR PLAN- 2 STORY

1ST FLOOR

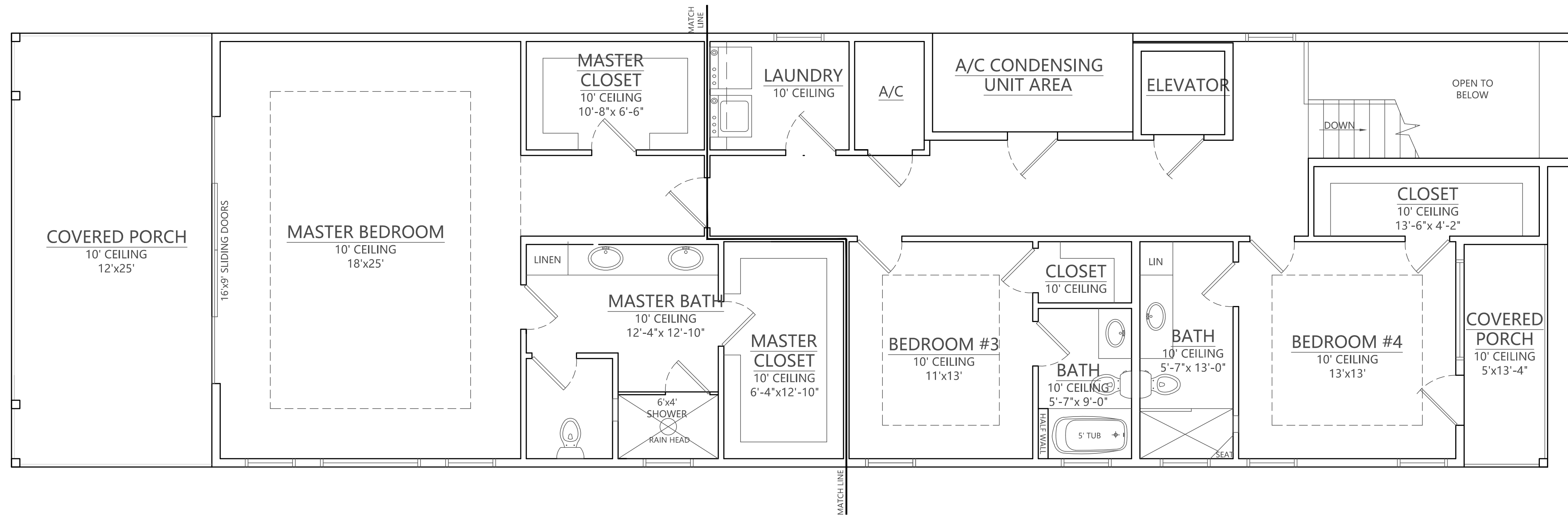
SCALE: 1/4"=1'-0"



FLOOR PLAN

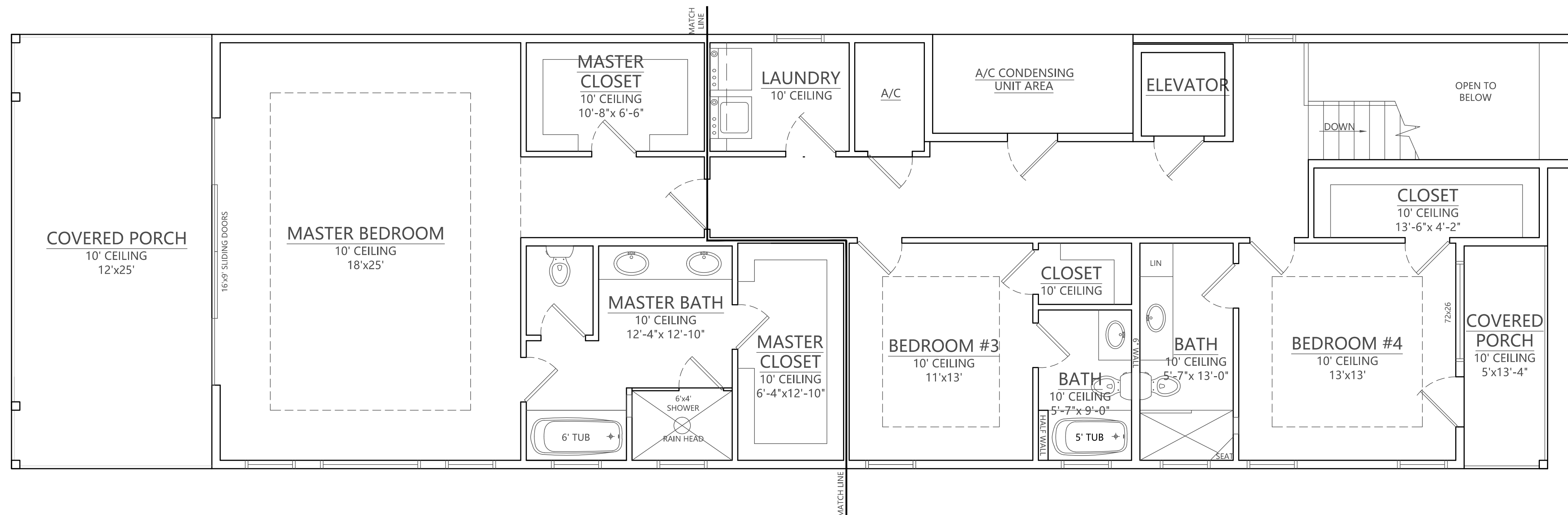
GARAGE

SCALE: 1/4"=1'-0"



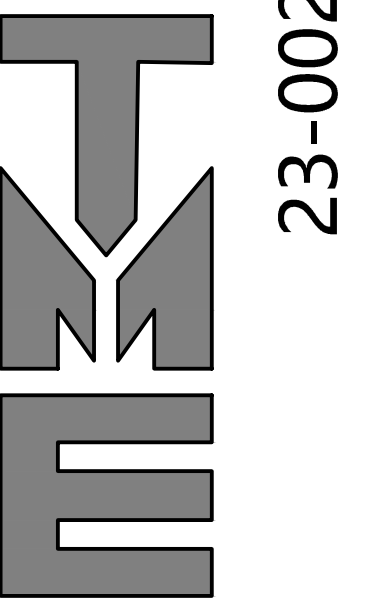
FLOOR PLAN OPTION 1A
2nd FLOOR

SCALE: 1/4"=1'-0"



FLOOR PLAN OPTION 1B
2nd FLOOR

SCALE: 1/4"=1'-0"



23-002

TERRY MORAN
ENGINEERING

P.O. BOX 4075
BILOXI, MS 39535
PH 228.896.4733
FAX 228.896.6768

TERRY MORAN,
P.E., P.L.S

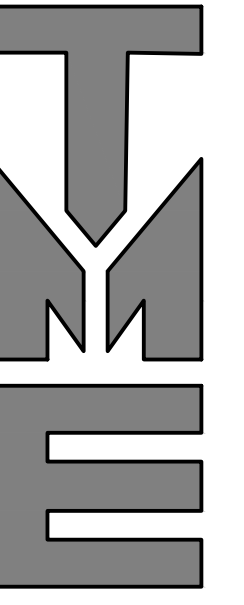
In Association With

FA FOUNTAIN & ASSOCIATES
 CIVIL AND COMMERCIAL DESIGN
 1822 15th Street, Ste. 12
 Gulfport, MS 39501
 228-861-5209

Date 08-22-2023
 Drawn By C.A.B.
 Check By T.J.M.
 REV _____

A NEW HOME IN
 CRISTIANO BOARDWALK
 SUBDIVISION
 BEACH BLVD
 BILOXI, MS 39531

B1.1



23-002

TERRY MORAN
ENGINEERING

P.O. BOX 4075
BILOXI, MS 39535
PH 228.896.4733
FAX 228.896.6768

TERRY MORAN,
P.E., P.L.S.

In Association With

FA | **FOUNTAIN & ASSOCIATES**
CIVIL AND COMMERCIAL DESIGN
1822 15th Street, Ste. 12
Gulfport, MS 39501
228-861-5209

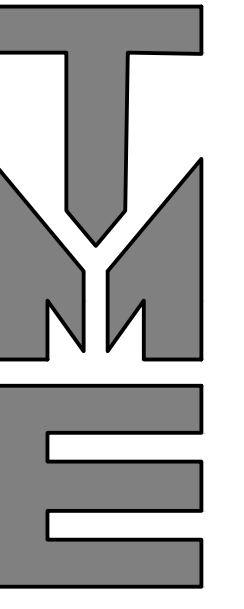
Date: 08-22-2023
Drawn By: C.A.B.
Check By: T.J.M.
REV: _____

A NEW HOME IN
CRISTIANO BOARDWALK
SUBDIVISION
BEACH BLVD
BILOXI, MS 39531

B2



FRONT ELEVATION OPTIONS



23-002

TERRY MORAN
ENGINEERING

P.O. BOX 4075
BILOXI, MS 39535
PH 228.896.4733
FAX 228.896.6768

TERRY MORAN,
P.E., P.L.S.

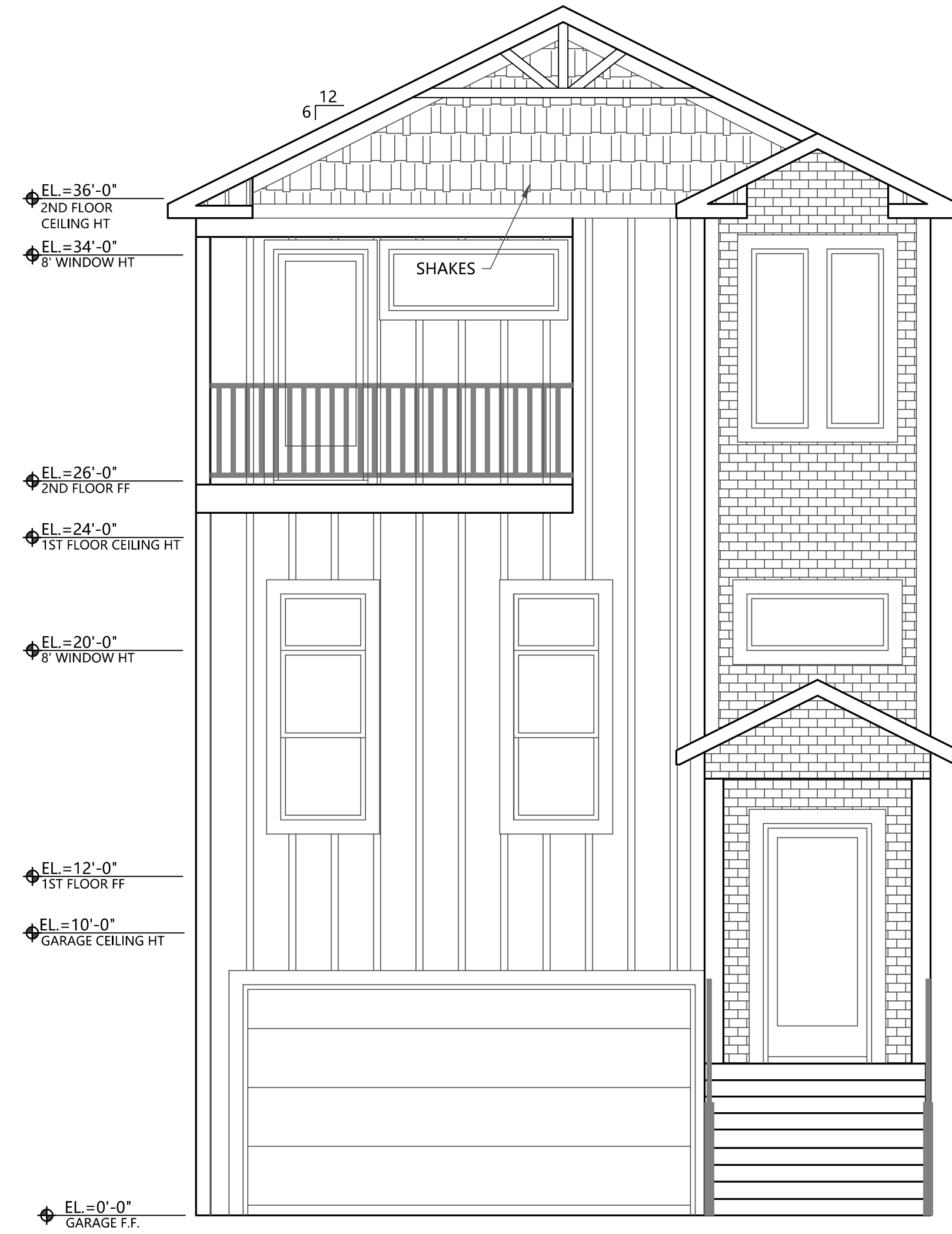
In Association With

FA | **FOUNTAIN & ASSOCIATES**
CIVIL AND COMMERCIAL DESIGN
1822 15th Street, Ste. 12
Gulfport, MS 39501
228-861-5209

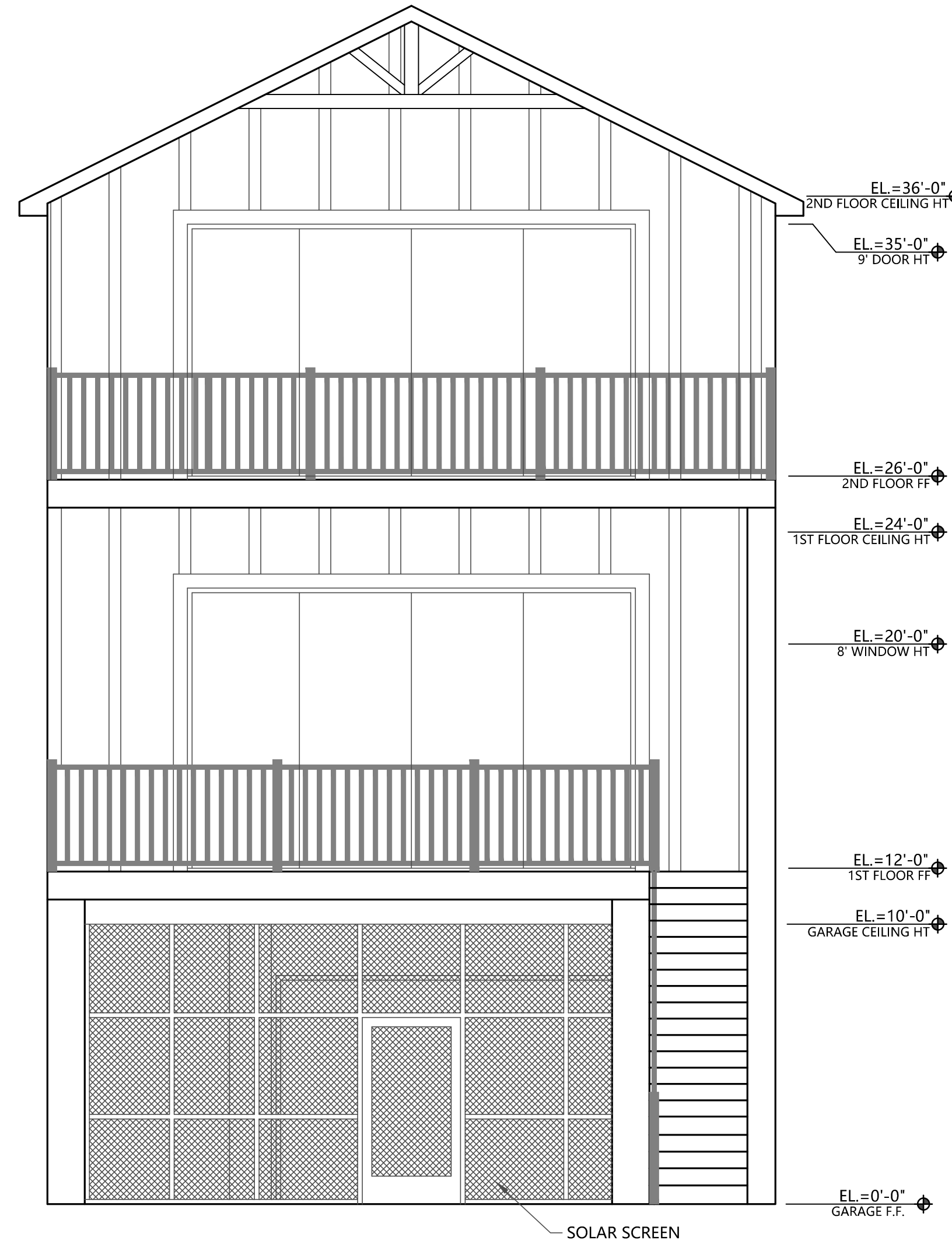
Date 08-22-2023
Drawn By C.A.B.
Check By T.J.M.
REV _____

A NEW HOME IN
CRISTIANO BOARDWALK
SUBDIVISION
BEACH BLVD
BILOXI, MS 39531

B2.1



FRONT ELEVATION OPTION



REAR ELEVATION



23-002

TERRY MORAN
ENGINEERING

P.O. BOX 4075
BILOXI, MS 39535

PH 228.896.4733
FAX 228.896.6768

TERRY MORAN,
P.E., P.L.S

In Association With

FA FOUNTAIN & ASSOCIATES
CIVIL AND COMMERCIAL DESIGN
1822 15th Street, Ste. 12
Gulfport, MS 39501
228-861-5209

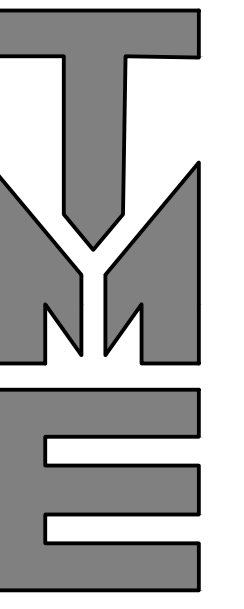
Date 08-22-2023
Drawn By C.A.B.
Check By T.J.M.
REV _____

A NEW HOME IN
CRISTIANO BOARDWALK
SUBDIVISION
BEACH BLVD
BILOXI, MS 39531



RIGHT ELEVATION

B2.2



23-002

TERRY MORAN
ENGINEERING

P.O. BOX 4075
BILOXI, MS 39535

PH 228.896.4733
FAX 228.896.6768

TERRY MORAN,
P.E., P.L.S

In Association With

FA FOUNTAIN & ASSOCIATES
CIVIL AND COMMERCIAL DESIGN
1822 15th Street, Ste. 12
Gulfport, MS 39501
228-861-5209

Date 08-22-2023

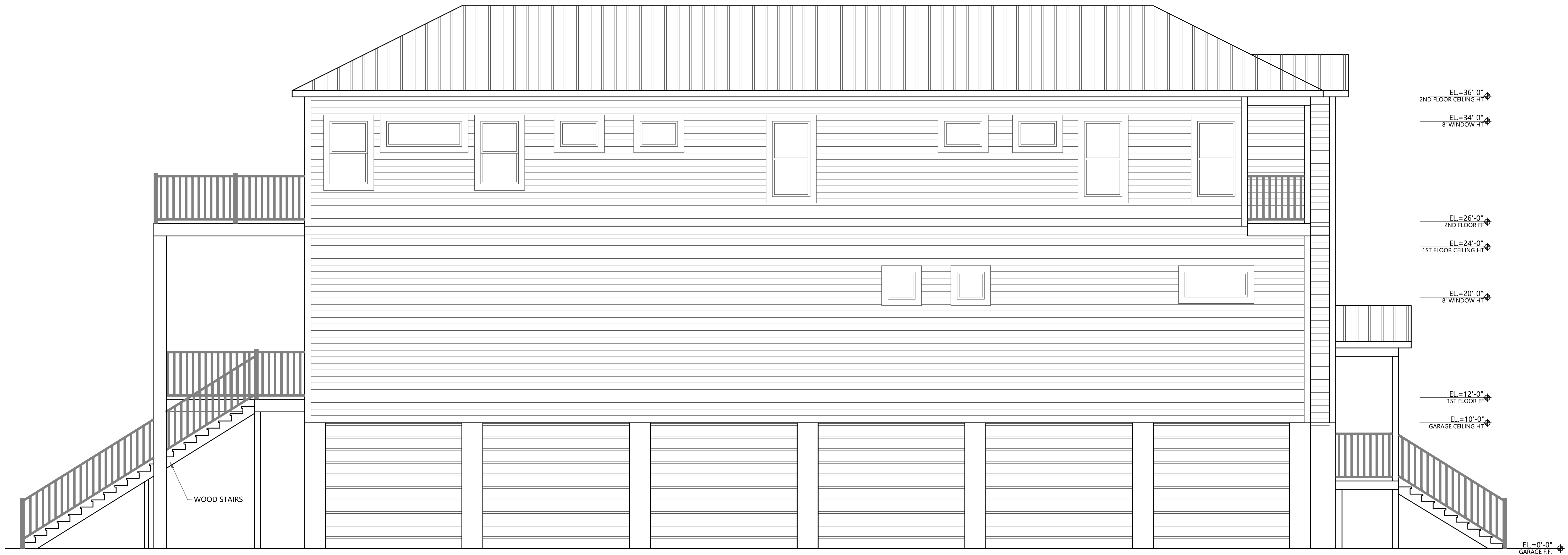
Drawn By C.A.B.

Check By T.J.M.

REV _____

A NEW HOME IN
CRISTIANO BOARDWALK
SUBDIVISION
BEACH BLVD
BILOXI, MS 39531

B2.3



LEFT ELEVATION

SCALE: 1/4" = 1'-0"